

# Family Learning - January 2018

Attleborough Community & Enterprise Centre:

- ❖ Be Confident
- ❖ E-Safety - taster session

Wymondham area

- ❖ Taste of play - taster session
- ❖ Family Arts

Please contact the Children's Centre on 01953 451196 or 01953 713896 for more information about these courses.

 **Norfolk** County Council  
Community Learning Services

## Useful Contacts

Breastfeeding Network Support Line

Family Information Service

Domestic Violence Support Line - Leeway

Breckland Housing

Health Visiting Team

Job Centre Plus

Norfolk Police

Attleborough Library

Hingham Library

Norfolk Community Learning Service

Homestart

Norfolk County Council

0344 800 8020

07603 977040

01603 306530

01953 850621

01953 452319

0845 4564567

[www.jobcentrepplus.gov.uk](http://www.jobcentrepplus.gov.uk)

0845 6043719

0300 300 0123

01362 656870

08452 412171

[www.norfolk.gov.uk/fts](http://www.norfolk.gov.uk/fts)

0344 800 8020

0300 100 0212

Sometimes we have to make changes to our programme. Please check our Facebook page for up-to-date details. Please note there is no on-site parking at the Children's Centre.

## Family Support and other services in your Area

- ❖ Did you know that you can self-refer for a service? Contact the Children's Centre to find out more about the services you feel will support your child and family.
- ❖ Do you need support with understanding your child's behaviour, funding for childcare, returning to education, training or work?
- ❖ We are also able to support families with children who have additional needs.
- ❖ If you would like more information about any of the above please feel free to drop in and see us or call on 01953 451196.
- ❖ Book start corner - Book start corner offers families and their children, aged 12 - 24 months, up to four visits in the home, at the Children's Centre or in the local library. This includes activities like mark making and helping to support your child with their development on communication, language and literacy.
- ❖ Baby massage - Learning how to connect with your baby through nurturing touch. Contact the Children's Centre for more information and to book onto a course.
- ❖ Dental hygiene advice.
- ❖ Support to access the local Food Bank
- ❖ Antenatal classes- We offer courses within the Children's Centre. Please speak to your midwife to find out more.

## Additional Information

- ❖ Self-Weigh facilities: Scales are located at the following locations:

Children's Centres: Attleborough and Wymondham (Please phone ahead to check availability on 01953 451196 or 01953 713896)

Libraries: Hethersett, Attleborough, Hingham.

- ❖ Please note the Children's Centres are a strawberry free zone due to a very severe allergy. This includes strawberry products, e.g. yogurts and drinks
- ❖ Did you know in your community there are a variety of groups and activities such as Parent and Toddler groups, Sensory Play and Musical Groups where you can have fun and support your child's development through play. Additional information provided at your local Children's Centre
- ❖ Please be aware that you may be asked to complete a 'marks on arrival form' when you and your child/children arrive for a group if they have any existing injuries, e.g. bumps and bruises. This is part of our policy, and is common practice in early years settings.

## Mobile Phone and Camera Use

Please be aware that the use of personal mobile phones and cameras is not allowed at Children's Centre activities. Guidelines regarding safeguarding of the children are in place to avoid children unknowingly appearing in the background of photographs of others.

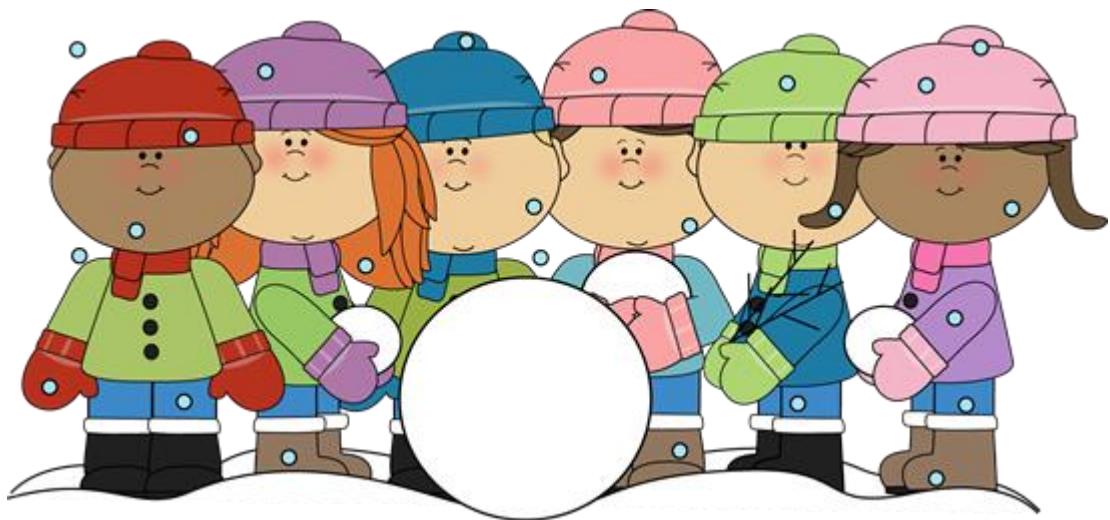


**We are now on Facebook.**

Visit and like our page to keep up to date with the latest news of what's on at the children's centre and in the local community.

Funded by  
 **Norfolk** County Council

HOW |  
**ACTION FOR  
CHILDREN**  
| WORKS



# Attleborough, Wymondham and Hethersett Children's Centre

**A Sure Start Children's Centre**

Spring Programme January - March 2018